

PROJECT: STAGEV UNIT - "TWIN" GENSET - TWIN GENERATOR 350 KVA STAGE V MOD. FET385 S-5
700 KVA PRP (350+350) - 400V 50 Hz @ 1500 RPM
CONSISTING OF 2 UNITS GENSETS OPEN FAME IN 20' CTN
2 X SCANIA STAGEV ENGINE MOD. DC13 320A 02-61
2 X STAMFORD ALTERNATOR MOD. S4L1D-E
DROOP CTs FOR SYNCHRO OPERATION
OPEN FRAME VERSIONS
ENGINE WATER HEATER
ON BOARD FUEL TANKS + AUTOMATIC REFUELLING DEVICES
MANUAL OIL PUMPS

1 X ELECTRIC PANEL FOR SYNCHRO
OPERATION WITH COMMON BUSBARS

Containing:

2 X IG200 COMAP

CONTROLLERS (GENSET 1 + GENSET 2) – MINT 2 X GCB 4P 630A MOTORIZED – ABB BRANDED

DIMENSIONS: 1700*1000*500 MM

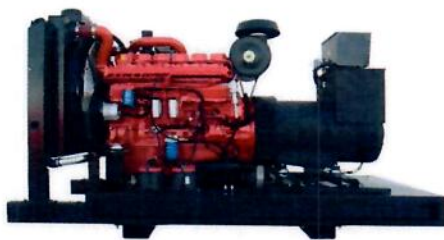
SPECIAL 20' CONTAINER (SMART VERSION)

Containing:

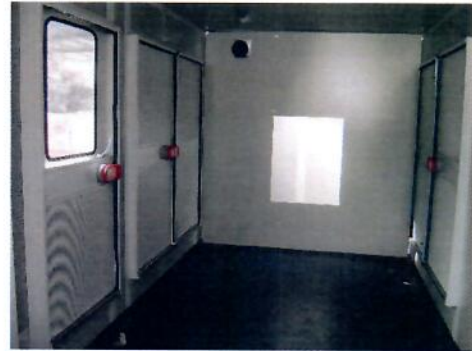
DIMENSIONS: 6058 X 2438 X 2591 MM

LIGHTING POINTS + SOCKETS

INCLUDED



CONTAINER 20' "SMART"



- 20' container conforming to ISO standards with a single-block structure and certified corner blocks for hooking and lifting traction, positioned on the lower and upper corners.
- The flooring will be covered in striated or almond welded sheet metal thickness 3+2.
- To increase the rigidity of the container and to avoid bending during lifting, both the outer base rails and the internal roof tubes will be reinforced.
- The container will be equipped with doors with emergency handle, painted steel hinges and a tubular rubber seal. The doors will be equipped with a pedestrian underlay covering with an almond aluminum sheet.
- Painted steel grids will be provided for the correct air circulation
- The container walls will be made of corrugated metal sheet and soundproofed with rock wool panels, covered with perforated steel protection. The standard noise level is 70 dB (A) \pm 3 to 7 meters.
- The containers undergo an industrial process of powder coating with phospho-degreasing, bonderization and polyester-based painting, standard color RAL 7035 (modifiable on request).
- According to the customer and according to the type of engine, the residential silencers can be mounted inside (standard) or outside on the roof (special) of the container.

